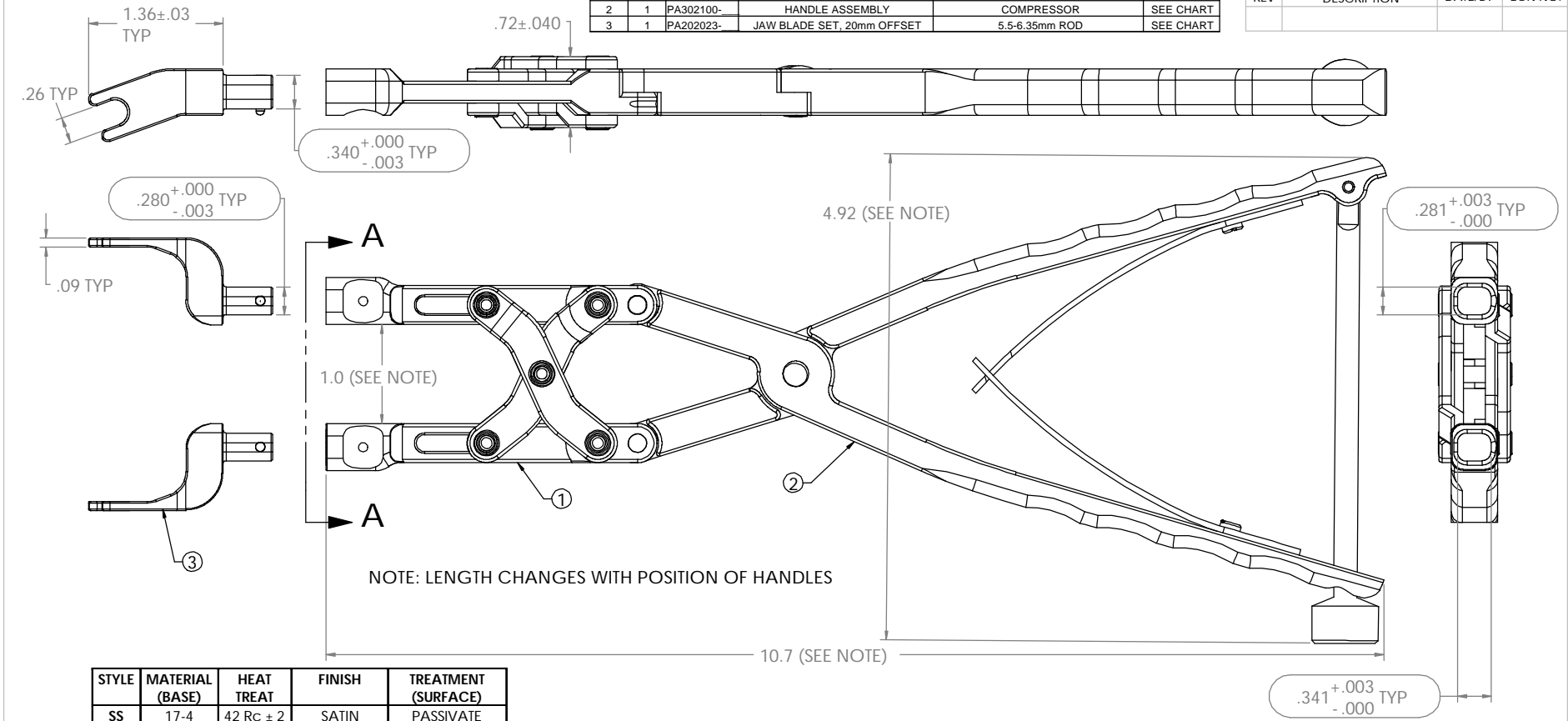


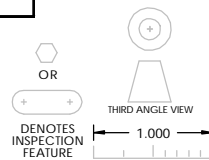
ITEM	QTY.	PART NO.	DESCRIPTION (MAIN)	DESCRIPTION (SUB)	MAT.
1	1	PA302300-	PARALLEL ACTION COMPRESSOR	AND DISTRACTOR SUB-ASSEMBLY	SEE CHART
2	1	PA302100-	HANDLE ASSEMBLY	COMPRESSOR	SEE CHART
3	1	PA202023-	JAW BLADE SET, 20mm OFFSET	5.5-6.35mm ROD	SEE CHART

REVISIONS			
REV	DESCRIPTION	DATE/BY	ECN NO.



STYLE	MATERIAL (BASE)	HEAT TREAT	FINISH	TREATMENT (SURFACE)
SS	17-4 13-8	42 Rc ± 2 47 Rc ± 2	SATIN BRUSH	PASSIVATE PER MP-001
TI	6Al-4V	NONE	GLASS BEAD	PTFE
CR	6Al-4V	NONE	GLASS BEAD	CHROME PLATE
NT	6Al-4V	NONE	NONE	NONE

THIS DOCUMENT INCLUDING ALL DATA, SPECIFICATIONS, AND INFORMATION CONTAINED WITHIN IS CONFIDENTIAL AND PROPRIETARY TO BEERE PRECISION MEDICAL INSTRUMENTS, INC. BY RETENTION, THE RECIPIENT AGREES NOT TO REPRODUCE, DISCLOSE, OR MAKE USE OF ITS CONTENTS IN ANY WAY WITHOUT PRIOR WRITTEN PERMISSION OF AN OFFICER OF BEERE PRECISION MEDICAL INSTRUMENTS, INC.



MATERIAL SEE CHART	UNSPECIFIED TOLERANCES		BEERE PRECISION MEDICAL INSTRUMENTS, INC. 2503 LINCOLNWOOD CT., RACINE, WI 53403 (262) 554-8505
	.X +/- .020	ANGLE +/- .1°	
HEAT TREAT SEE CHART	.XX +/- .010	MACHINE FINISH 32	TITLE PARALLEL ACTION COMPRESSOR WITH INT. HANDLES & EXT. BLADES
FINISH SEE CHART	.XXX +/- .005	CONCENTRICITY .005 T.I.R.	
DRAWN JAR	DO NOT SCALE DRAWING		DATE 11/22/00
	APPROVED	DATE	DATE
REMOVE ALL BURRS	BREAK SHARP CORNERS	PART TO BE FREE OF DIRT, OIL & CONTAMINANTS	SIZE B
			SUPERSEDED NO.
			DRAWING NUMBER PA312123-
			REV. N/C
			SCALE 1:1
			ILLUSTRATION
			SHEET 1 OF 1

SECTION A-A