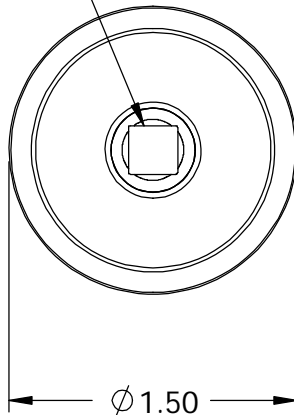


FOR REFERENCE ONLY

REVISIONS - SC211xxx-___(CC)

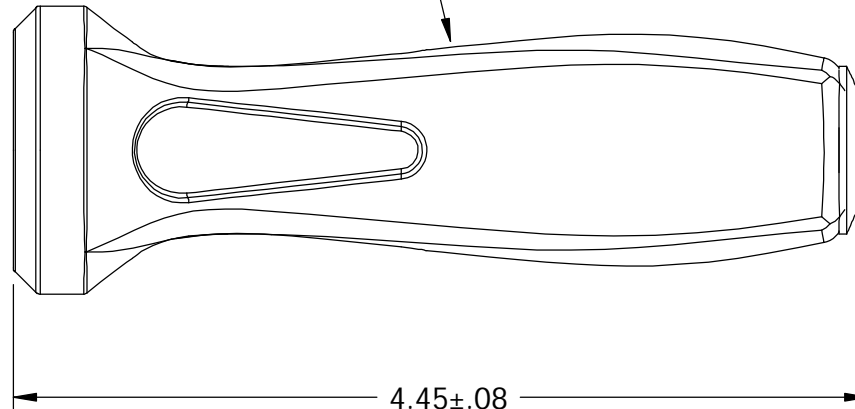
REV	DESCRIPTION	DATE/BY	DCN NO.

STANDARD FEMALE
1/4" SQUARE DRIVE



Ø 1.50

SILICONE RUBBER HANDLE



4.45±.08

STAINLESS STEEL
ENDCAP

PRODUCT SPECIFICATIONS TO BE FILLED IN AT TIME OF ORDER:

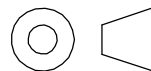
COMPLETE PART NO. _____

TORQUE SETTINGS: _____ ±10% (60 LB-IN MAX)

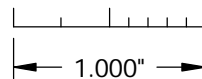
COLOR OF HANDLE: _____

APPROVAL/DATE: _____


OR DENOTES INSPECTION FEATURE



THIRD ANGLE VIEW



THIS DOCUMENT INCLUDING ALL DATA, SPECIFICATIONS, AND INFORMATION CONTAINED WITHIN IS CONFIDENTIAL AND PROPRIETARY TO BEERE PRECISION MEDICAL INSTRUMENTS BY RETENTION. THE RECIPIENT AGREES NOT TO REPRODUCE, DISCLOSE, OR MAKE USE OF ITS CONTENTS IN ANY WAY WITHOUT PRIOR WRITTEN PERMISSION OF AN OFFICER OF BEERE PRECISION MEDICAL INSTRUMENTS.

MATERIAL		UNSPECIFIED TOLERANCES				5307 95TH AVE KENOSHA, WI 53144 (262) 657-2800			
HEAT TREAT		.X +/- .020 ANGLE +/- 1° .XX +/- .010 MACHINE .XXX +/- .005 FINISH 32 .XXXX +/- .0005		TITLE T-LMT, SD, LG AXL 1/4 FEM SQ DR		SIZE A		SUPERSEDED NO.	
FINISH		CONCENTRICITY .005 T.I.R. SQUARENESS .001 PER. IN.		DRAWING NO.		REV.			
DO NOT SCALE DRAWING		DRAWN CLT DATE 03/14/96		SCALE		SHEET			
REMOVEMILL BURRS BREAK SHARP CORNERS		APPROVED DATE		SCALE 1:1		SHEET 1 OF 1			
PART TO BE FREE OF DIRT, OIL, AND CONTAMINANTS		DRAWING NO. SC211xxx-___(CC)		ILLUSTRATION		REV. F			