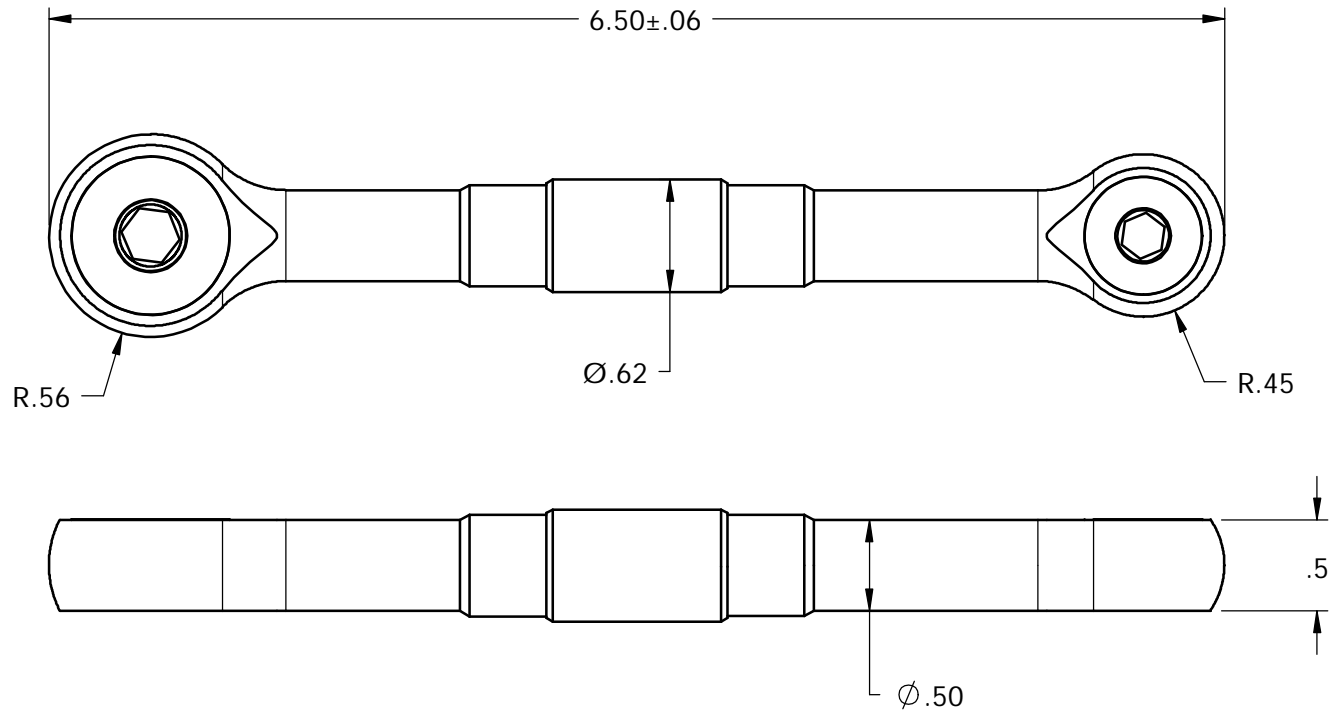


FOR REFERENCE ONLY

REVISIONS - V0200500

REV	DESCRIPTION	DATE/BY	ECN NO.



PRODUCT SPECIFICATIONS TO BE FILLED IN AT TIME OF ORDER:

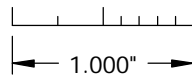
COMPLETE PART NO. _____

TORQUE SETTINGS: _____ ±10%


COLOR OF HANDLE: _____

APPROVAL/DATE: _____

OR DENOTES INSPECTION FEATURE



THIS DOCUMENT INCLUDING ALL DATA, SPECIFICATIONS, AND INFORMATION CONTAINED WITHIN IS CONFIDENTIAL AND PROPRIETARY TO BEERE PRECISION MEDICAL INSTRUMENTS, INC. BY RETENTION, THE RECIPIENT AGREES NOT TO REPRODUCE, DISCLOSE, OR MAKE USE OF ITS CONTENTS IN ANY WAY WITHOUT PRIOR WRITTEN PERMISSION OF AN OFFICER OF BEERE PRECISION MEDICAL INSTRUMENTS, INC.

MATERIAL		UNSPECIFIED TOLERANCES				5307 95TH AVE KENOSHA, WI 53144 (262) 657-2800	
HEAT TREAT		X +/- .020 XX +/- .010 XXX +/- .005 XXXX +/- .0005		ANGLE +/- 1° MACHINE FINISH 32		TITLE	
FINISH		CONCENTRICITY .005 T.I.R. SQUARENESS .001 PER. IN.		DO NOT SCALE DRAWING		TORQUE WRENCH, DBL ENDED 25-60 IN-LBS, 7/32-9/32	
REMOVE ALL BURRS		BREAK SHARP CORNERS		DRAWN MTG	DATE 4/28/97	SIZE A	SUPERSEDED NO. NO.
PART TO BE FREE OF DIRT, OIL, AND CONTAMINANTS		APPROVED		DATE		V0200500 REV. F	
SCALE 1:1						ILLUSTRATION SHEET 1 OF 1	