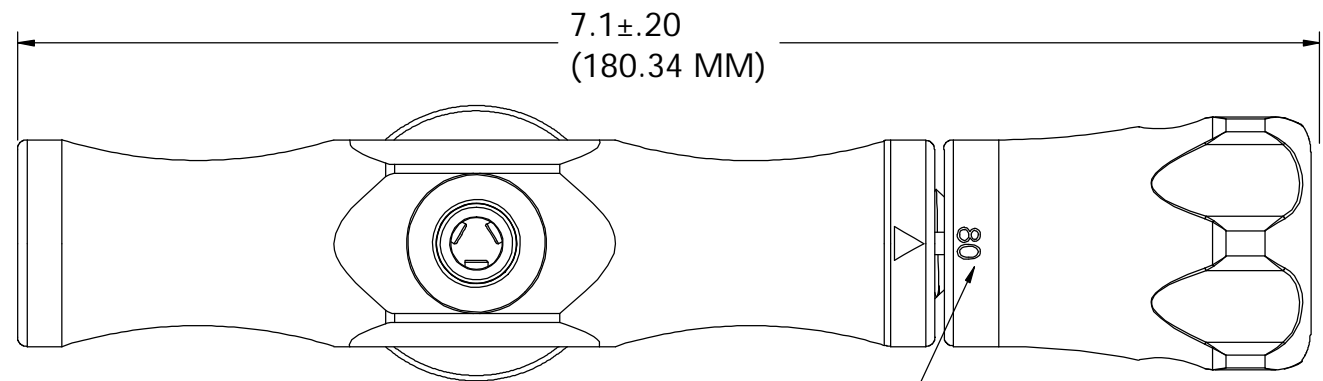
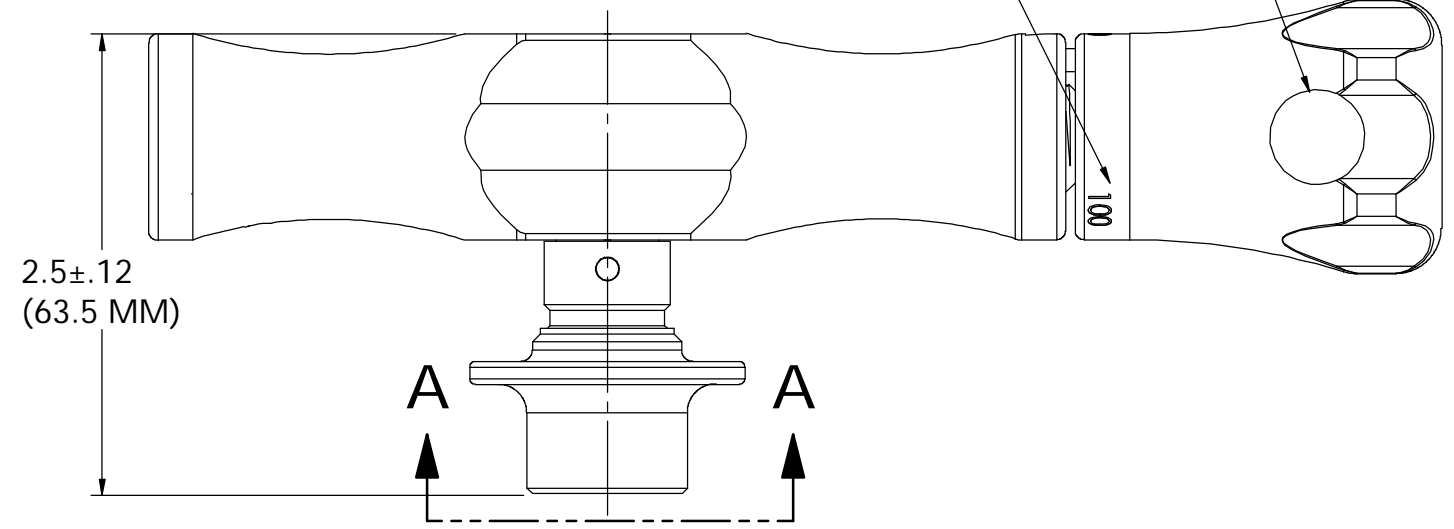


REVISIONS			
REV	DESCRIPTION	DATE/BY	ECN NO.
N/C	RELEASED FOR PRODUCTION	07/11/01 JIW	1764



LOAD MARKING ARE FOR VISUAL REFERENCE ONLY, SEE CUSTOMER REQUIREMENTS FOR ACTUAL MARKING.

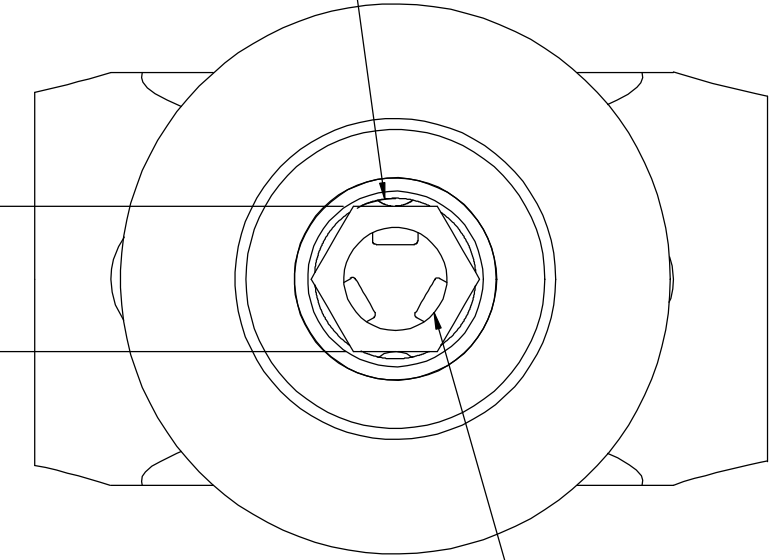
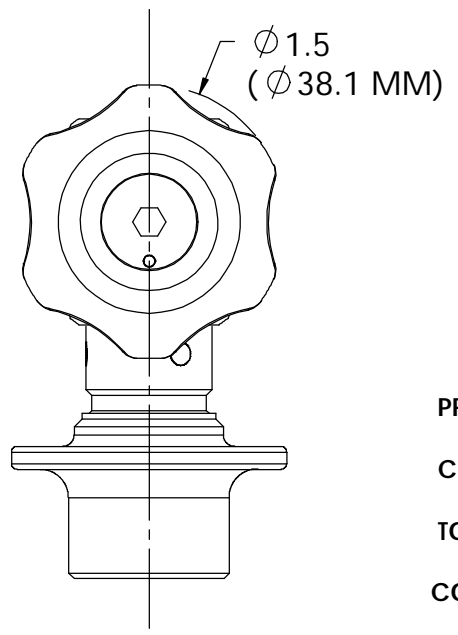


$\phi .51900000$
(13.18 MM)

C-BORE $\phi .4385^{+.001}_{-.000} / .750 \nabla$
($\phi 11.138 \text{ MM} / 19.05 \text{ MM} \nabla$)

$.39700000^{+.004}_{-.000}$ HEX
(10.08 MM HEX)

$\phi .002 \text{ (M)} \text{ A (M)}$



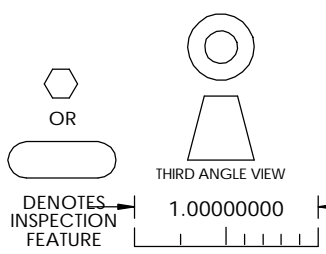
SECTION A-A
SCALE 2 : 1

$\phi .250 \text{ MIN THRU}$
($\phi 6.35 \text{ MM}$)

$\phi .005 \text{ (M)} \text{ A (M)}$

PRODUCT SPECIFICATIONS TO BE FILLED IN AT TIME OF ORDER:
 COMPLETE PART NO. _____
 TORQUE SETTINGS: _____ ±15% (120 LB-IN MAX)
 COLOR OF HANDLE: _____
 APPROVAL/DATE: _____

THIS DOCUMENT INCLUDING ALL DATA, SPECIFICATIONS, AND INFORMATION CONTAINED WITHIN IS CONFIDENTIAL AND PROPRIETARY TO BEERE PRECISION MEDICAL INSTRUMENTS, INC. BY RETENTION, THE RECIPIENT AGREES NOT TO REPRODUCE, DISCLOSE, OR MAKE USE OF ITS CONTENTS IN ANY WAY WITHOUT PRIOR WRITTEN PERMISSION OF AN OFFICER OF BEERE PRECISION MEDICAL INSTRUMENTS, INC.



VT108xxx-xxx-____(CC)	MATERIAL	UNSPECIFIED TOLERANCES		BEERE PRECISION MEDICAL INSTRUMENTS, INC. 2503 LINCOLNWOOD CT., RACINE, WI 53403 (262) 554-8505	
	HEAT TREAT	.X +/- .020	ANGLE +/- 1°	TITLE	
FINISH	.XX +/- .010	.XXX +/- .005	MACHINE FINISH 32	VARIABLE TORQ LIMITING	
		.XXXX +/- .0005	CONCENTRICITY .005 T.I.R.	W/10mm HEX QUICKLOCK	
			SQUARENESS .001 PER. IN.	SIZE B	SUPERSEDED NO P-033800
			DO NOT SCALE DRAWING	DRAWING NUMBER	VT108xxx-xxx-____(CC)
				SCALE 1:1	ILLUSTRATION
					SHEET 1 OF 1
					REV B